



From mountain to sea

# Lairhillock Primary School Handbook 2024/25

---



---

**Contents**

<b>Introduction to Lairhillock School</b>	<b>4</b>
<b>Our Vision, Values, Aims and School Ethos</b>	<b>5</b>
<b>Curriculum</b>	<b>9</b>
<b>Assessment and Reporting</b>	<b>13</b>
<b>Transitions (Moving On)</b>	<b>14</b>
1 Admissions	17
2 Placing requests & School Zones	17
<b>Support for Children and Young People</b>	<b>18</b>
3 Getting it Right for Every Child	18
4 Wellbeing	18
5 Children's Rights	19
6 The named person	21
7 The Child's Plan	22
8 Educational Psychology	23
9 Universal Inclusive Offer to all Children and Young People	23
10 Support for Learning	24
11 Enhanced Provision and Complex Needs Provision	24
12 Child Protection	25
13 Further Information on Support for Children and Young People	26
<b>Parent &amp; Carer Involvement and Engagement</b>	<b>27</b>
14 Parental Involvement and Engagement Strategy	27
15 Parental Engagement	27
16 Communication	27
17 ParentsPortal.scot	28
18 Learning at Home	28
19 Parent Forum and Parent Council	29
20 Parents and School Improvement	29
21 Volunteering in school	29
22 Collaborating with the Community	29
23 Addressing Concerns & Complaints	30

---

---

<b>School Policies and Useful Information</b>	<b>30</b>
24 Attendance	31
25 Holidays during term time	32
26 Dress Code	32
27 Clothing Grants	33
28 Transport	33
29 Privilege Transport	33
30 Early Learning & Childcare Transport	34
31 Enhanced Provision and Complex Needs Provision	34
32 School Closure & Other Emergencies	34
33 Storm Addresses	35
34 Change of address and Parental Contact Details	36
35 Anti-bullying Guidance	36
36 School Meals	37
37 Healthcare & Medical	38
38 Exclusion	39
39 Educational Visits	39
40 Instrumental Tuition	40
41 Public Liability Insurance	40
42 School Off Site Excursion Insurance	40
43 Data we hold and what we do with it.	41
44 The information we collect from you	41
45 Your Data, Your Rights	42
46 Parental Access to Records	42
47 Information Sharing	43
48 ScotXed	43
<b>Further Information</b>	<b>44</b>

---

All information in this handbook is correct as of November 2024.

---

# Introduction to Lairhillock School

I am delighted to welcome you to Lairhillock School. As Head Teacher, I hope that we can work in partnership with you to ensure that your child reaches his/her maximum potential. We greatly value positive relationships and wellbeing in its broadest sense as the bedrocks of learning at Lairhillock. We firmly believe that children learn best when they are safe, happy and cared for.

We take pride in the fact that this is a happy and industrious school with a real sense of team spirit and we value that the education of their child(ren) is shared with parents, who have a very important role to play. Excellent home-school communication can play a pivotal role in ensuring the best school experience for your child.

We hope you find this handbook informative, and we look forward to developing positive working relationships with your child and family. A warm welcome to our Lairhillock School community.

Mr Stewart Crabb  
Head Teacher

## School Contact Details

Head Teacher	Mr Stewart Crabb
School Name	Lairhillock School
Address	Netherley Stonehaven AB39 3QS
Telephone Number	01569 690485
Nursery Number	01569 690488
Website	<a href="http://www.lairhillock.aberdeenshire.gov.uk">www.lairhillock.aberdeenshire.gov.uk</a>
Parent Council Email	<a href="mailto:lairhillockparentcouncil@gmail.com">lairhillockparentcouncil@gmail.com</a>
Parent Council Social Media	<a href="https://www.facebook.com/groups/163851227139790">https://www.facebook.com/groups/163851227139790</a>

## Adverse weather and emergency closure

Parents can access information about school closure from the following website:

[School closures and transport changes - Aberdeenshire Council](#)

---

## **About Lairhillock School**

Lairhillock School, a non-denominational nursery and primary school situated in an open rural location, approximately 6 miles from Stonehaven and 6 miles from Peterculter, Aberdeen. The catchment area stretches from just east of Durriss on the South Deeside Road across to Blairs in the East and as far south as Fishermyle. We provide education for children aged 3 to 12 years i.e. from ante-preschool nursery through to Primary 7.

On leaving Lairhillock Primary School the pupils transfer to either Mackie Academy in Stonehaven or Cults Academy in Aberdeen. Lairhillock School is part of the Stonehaven Community Schools' Network and the Cults Academy Associated Schools Group.

Devolved budgets are managed in accordance with authority guidelines to support planned improvements in the school.

Lairhillock Primary School has eleven Teachers, an Early Years Senior Practitioner, an Early Years Lead Practitioner and five Early Years Practitioners. The Head Teacher is non-class committed. We also have a visiting specialist teacher who provides additional support for learners for two days each week. The school works closely with a range of other support agencies and volunteers in order to provide the best possible experience for children with additional support needs. The teaching staff are supported by Pupil Support Assistants, a part time school administrator, a part time administrative assistant, kitchen staff, cleaners, and a part time janitor.

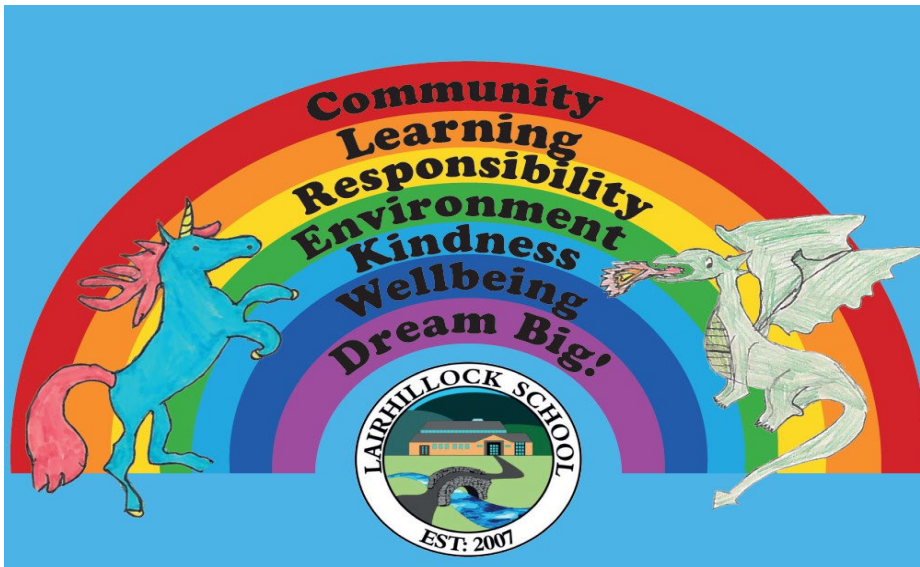
Our Active Schools Coordinator organises a range of additional active and sporting activities for the children.

Community links are a valued part of school life. The school has a very supportive Parent Council, who support school improvement activities and raise additional funds to provide many extras for the pupils in the school.

# **Our Vision, Values and School Ethos**

We have worked with staff, children and parents to create our vision, aims and values. Our vision for Lairhillock is that 'Together Everyone Achieves More'.

---



### Our Aims

- To build our school community through engaging with partners
- To progress curriculum, learning, teaching and achievement to maximise learning opportunities
- To promote high levels of

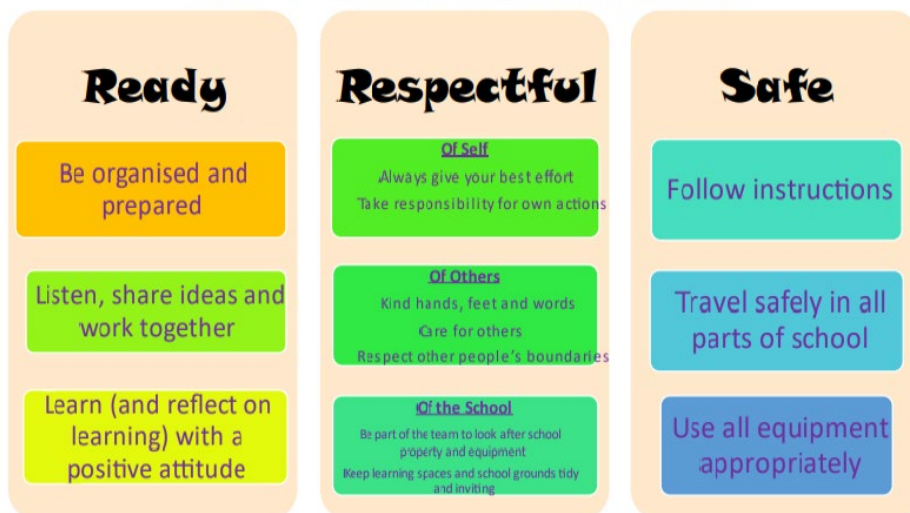
engagement and respectful behaviour

- To build on the school's green credentials and develop our outdoor learning
- To promote the importance of kindness throughout the school
- To build a culture across the school that maximises wellbeing for all
- To promote the opportunities for all of us to 'Dream Big !'

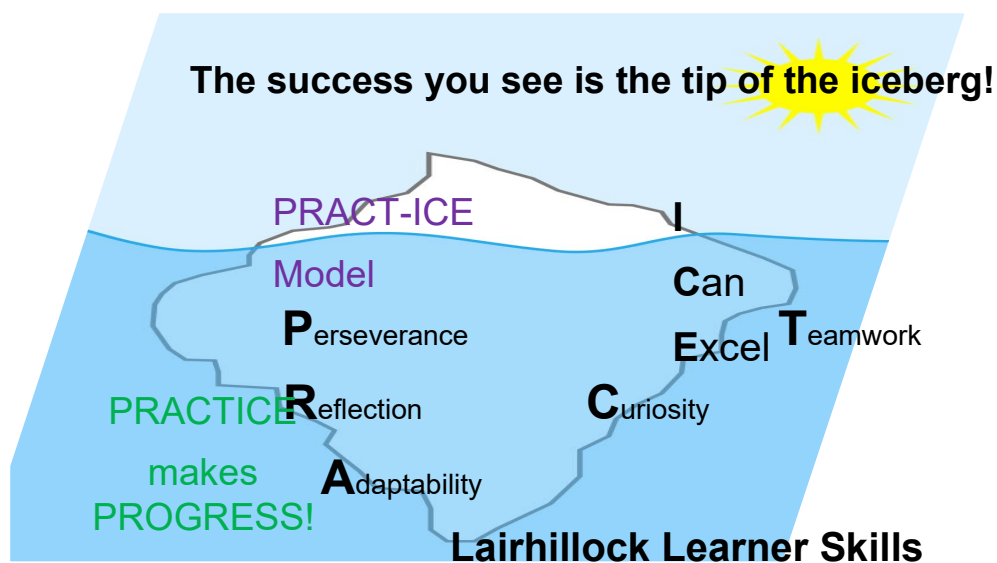
### Our Values

## School Ethos

### Our School Environment:



### Our Learning Characteristics/Skills – Our PRACTice Model:



- Patient Perseverance:
  - Able to identify goals, work towards them, think and problem solve around setbacks and successfully achieve!
- Readily Reflective:

8 |

- Always ready to reflect on learning, embrace challenges and identify barriers in order to change, improve and grow!
  - Amazingly Adaptable:
    - With flexible skills, ready for all types of learning and work, present and future!
  - Constantly Curious:
    - Always asking questions, striving to learn throughout life so that they feel valuable, happy and fulfilled!
  - Tremendous Teamworkers:
    - Able to build and sustain relationships, contribute to and lead teams in learning, work and life – always striving to work with others to make their world a better place!
-



# Curriculum

Within our school, we aim to provide a curriculum that is both inclusive and ambitious for all – a curriculum which is both academically challenging as well as providing opportunities to develop skills for learning, life and work.

Our curriculum will be based around the four capacities of Curriculum for Excellence – to ensure our pupils are successful learners, confident individuals, effective contributors, and responsible citizens. Our curriculum will also reflect the principles of curriculum design to ensure breadth, depth, personalisation & choice, challenge & enjoyment, progression, coherence, and relevance. We will therefore, have a curriculum which we will adapt continuously over time to meet the needs of our pupils.

Following the principles of Curriculum for Excellence, achievement of children and young people is celebrated in its broadest sense. This means looking beyond formally assessed learning, to recognise activities like volunteering and participation in arts, sports, and community-based programmes. This approach complements the nurturing and aspirational outcomes of Getting It Right for Every Child, and our aim in Aberdeenshire to overcome inequality by Raising Attainment for All, promoting Equity and Excellence in schools, and Closing the Gap. Further information on the school's approach to Curriculum for Excellence including information for parents, can be found on the school website at <http://lairhillock.aberdeenshire.sch.uk>

## Curricular Areas

- **Literacy and English Language:** Listening, Talking Reading, and Writing.
  - **Numeracy and Mathematics:** Number, Money and Measure, Information Handling, Shape, Position and Movement.
  - **Health & Wellbeing:** Mental, emotional, social, and physical wellbeing, Physical education, activity and sport, Food and health, Substance misuse, Relationships, sexual health and parenthood.
  - **Social Studies:** People, past events and societies, People, place and environment, People, society, economy, and business.
  - **Sciences:** Planet Earth, Forces, electricity and waves, Biological Systems, Materials, Topical Sciences.
  - **Technologies:** Technological developments in society, Business technology skills and knowledge, Computing science, Food and textiles, Craft, design, engineering, and graphics.
  - **Expressive Arts:** Music, Drama, Art and Design and Dance.
  - **Religious and Moral Education:** Christianity, World Religions, Development of beliefs and values.
  - **Modern Languages:** French and Spanish
-

## Curriculum Design

Our curriculum is designed based on the following 7 principles:

- Challenge and enjoyment
- Breadth
- Progression
- Depth
- Personalisation and choice
- Coherence
- Relevance

## Developing The Young Workforce

Developing the Young Workforce (DYW) is the Scottish Government's Youth Employment strategy to better prepare young people for the world of work.

Developing the Young Workforce is embedded in Scotland's Curriculum and along with the Curriculum for Excellence and Getting it Right for Every Child (GIRFEC) it is one of the three main building blocks underpinning Scotland's education offer for children and young people.

The DYW Aberdeenshire priorities are as follows:

- Development of the DYW Curriculum offer including embedding the Career Education Standard Entitlements 3-18 and the further development of BGE pathways and Foundation Apprenticeships in the senior phase.
- Skills Development – embedding skills for learning, life and work (Metaskills) and skills profiling
- Partnership Development, including partnership with employers
- Support for Equalities

As part of the 3-18 curriculum, pupils will develop skills for learning, life, and work and Skills 4.0 and Metaskills. Throughout their time in school, from Early Years onwards, all pupils will have an opportunity to engage with employers, through experiences like workplace visits, career talks, employability events and courses, work experience and curriculum based activities. They will also have the opportunity to learn about further and higher education as well as different career pathways into employment.

In S4-6, pupils will be given the opportunity to study for vocational qualifications, including Foundation Apprenticeships, alongside the more traditional qualifications.

---

## Curriculum Levels

EARLY LEVEL The pre-school years and P1, or later for some.

FIRST LEVEL To the end of P4, but earlier or later for some.

SECOND LEVEL To the end of P7, but earlier or later for some.

THIRD & FOURTH LEVELS S1 to S3, but earlier for some.

The fourth level broadly equates to Scottish Credit and Qualifications Framework level

## Extra-Curricular Activities

School staff and volunteers run extra-curricular activities supported by Active Schools Co-ordinators.

## 1+2 Language Learning

The Scottish Government policy 'Language Learning in Scotland: A 1+2 Approach' is now embedded in our curriculum. Children are growing up in a multilingual world and to allow them to take their place as global citizens, they need to be able to communicate in many settings. This approach entitles every child and young person to learn two languages at school in addition to their mother tongue language.

In our School the first foreign language is French. This language will be learned from P1 (in Primary School) through to S3 (in secondary school). (Amend depending on cluster) For more information go to <https://www.aberdeenshire.gov.uk/>

If you would like your child to access Gaelic Medium Education and they have not yet started to attend a primary school, you can make a request for an assessment of need for Gaelic Medium Primary Education (GMPE). For more information, please go to: <http://aberdeenshire.gov.uk/schools/information/gaelic-in-schools/>

The parent or carer of any child or young person can make a request for their child to attend to any school which offers GMPE. This will enable your child to be taught by specialist staff. As there are currently no schools in Aberdeenshire which have GME provision learners are transported to school in Aberdeen City.

## Further Information

More general information on Curriculum for Excellence and the new Qualifications can be found by clicking on the hyperlinks below.

---

**Policy for Scottish Education:**

<https://education.gov.scot/scottish-education-system/policy-for-scottish-education>

**Early Learning & Childcare:**

<https://www.education.gov.scot/scottish-educationsystem/Early%20learning%20and%20childcare>

**Broad General Education (Pre school – S3):**

<https://education.gov.scot/scottish-educationsystem/Broad%20general%20education>

**Senior Phase and beyond (S4 – 16+):**

<https://education.gov.scot/scottish-education-system/senior-phase-and-beyond>

**National Qualifications:**

<https://www.sqa.org.uk/sqa/58062.3806.html?pMenuID=5605>

---

# Assessment and Reporting

Pupils move through the curriculum at their own pace. A wide range of assessment techniques are used in school depending on what is being assessed and the reason for the assessment e.g.

- Observation of what the pupils say, make, write and do.
- Homework
- Self and peer assessments
- Marking of class work and other individual/class assessments
- Ongoing tracking and monitoring procedures in school
- Scottish National Standardised Assessments (P1, P4, P7 and S3)

Progress will be evidenced using a variety of approaches that best reflect the learning that has taken place and will track the skills that your child or young person is developing.

Assessment is ongoing throughout the Broad General phase and is a continuous process which influences the goals set for your child. As part of assessment, each year children and young people in P1, P4, P7 and S3 will participate in the Scottish National Standardised Assessments (SNSA). These national assessments are completed online and provide teachers with immediate feedback on each child or young person's progress in literacy and numeracy. Children and young people do not have to prepare or revise for the assessments, which take place as part of normal learning and teaching. The assessments do not have any pass/fail mark and the results are used to help teachers plan the next steps in learning for each child/young person. Further information on SNSA is available at <https://standardisedassessment.gov.scot/>

The results of children's achievements are discussed with them regularly so that they are involved in taking responsibility for their own learning. This may take the form of oral discussion and/or written comment. In this way, it is hoped to assist the pupil identify what has been learned and the next steps to their learning. Children regularly set targets in their work.

Parents will be informed of progress:

- through pupil profiles/learning logs
- through parent consultation evenings and other meetings
- through curriculum/learning events/parent workshops
- by the annual school report
- Individual Education Plans and associated documents

Parents and carers are encouraged to contact the school at other times throughout the year to discuss their child's progress.

---

## Secondary schools: Assessment & Reporting Senior Phase (S4-S6)

In the Senior Phase pupils embark on the National Qualifications.

As pupils enter this phase, they are set an aspirational target grade for each subject they are studying. This forms the basis for learning conversations between staff and pupils to discuss progress and identify next steps. This is shared with parents/carers through Tracking Reports.

Further Information on Assessment, Reporting & Profiling can be found on Parentzone:

<https://education.gov.scot/parentzone/learning-in-scotland/assessment-and-achievement>

# Transitions (Moving On)

## Transfer to Ante-Pre School and Pre-School Nursery

In order to support and ease transition into early years setting, we arrange a series of induction events/meetings/Come and Play sessions for you and your child. These events are planned to allow you and your child to become familiar with the early years setting, to meet staff, to meet with the other children and to find out about life in early years and what you can do to support your child's transition into the early years setting. A major part of this process involves parents sharing information about their children's needs and you will be asked to complete a number of forms regarding e.g. your child's specific needs. Any other early years setting which your child attends will forward transition information regarding your child's needs and learning journey.

## Transfer to Primary 1

To support and ease transition into P1, we arrange a series of induction events/meetings for you and your child. These events are planned to allow you and your child to become familiar with the school building, to meet staff, to meet with the other children including your child's buddy and to find out about life in school and what you can do to support your child's transition into P1. The induction process starts in your child's pre-school year, with P1 staff arranging to visit your child in their pre-school setting wherever possible in order to begin to get to know your child.

Induction meetings are arranged for parents around May/June in order to share information about starting school and how you can help your child at home. This is also an opportunity for parents to meet their child's teacher and to ask any questions or share any information. At these induction meetings, parents are issued with a range of materials designed to support children's learning at home and parents are

---

asked to complete a range of forms to gather information about e.g. your child's medical needs, contact addresses, special needs etc.

The children in our nursery are constantly involved with the events and routines of the school. In Term 4, parent induction sessions are held, and arrangements are made for P1 staff to visit children in their nursery setting. Children spend sessions in their 'new' class, and they are invited to have a school lunch with parents. They are also invited to Sports Day. In Term 1 parent workshops on literacy and numeracy are held. Nursery and P1 staff work closely together to ensure the transition process is effective.

Our prospective P1s also have the opportunity to come into class for a series of induction sessions around May/June. This allows the children to begin to get to know their classmates and their teacher as well as familiarising themselves with the school buildings and classroom routines.

Parents are also invited to join their P1 children for a school lunch.

Information communicating details of P1 induction arrangements along with dates will be communicated directly to prospective P1 parents around April.

### **Transfer to Secondary Education**

Liaison takes place between staff at Lairhillock School and staff at local secondary schools. During the year, staff from both Cults and Mackie Academies visit Lairhillock to meet Primary 7 pupils. The pupils go on two day visits to Cults Academy and three day visits to Mackie Academy during the summer term. This allows the pupils to become familiar with the layout of the Academies and sample their first year timetable. The Induction Days are a very positive experience and help reassure pupils and ease the transition from primary to secondary. Further information is communicated to parents about the induction calendar for secondary school around February each year. Parents also have the opportunity to visit the academies where information will be shared and questions can be asked.

Information about our P7 pupils is shared with guidance staff at the academy to help support appropriate continuity of education. Parents are welcome to attend these information sharing meetings, especially when additional support has been provided previously

Academy staff also visit our pupils in Lairhillock School where information is shared and questions can be asked.

Where parents opt to send their child to any other secondary school, (following placing requests) Lairhillock School supports any alternative transition arrangements wherever possible.

Placing request forms are available from the school (see page 18 for further information on placing requests.)

---

### **Contact details – Mackie Academy**

Slug Road

Stonehaven

Kincardineshire

AB39 3DF

Telephone Number: 01569 762071

The schools which send pupils to Mackie Academy, Stonehaven are part of a Cluster. The other schools within the Cluster are Arduthie School, Bervie School, Catterline School, Dunnottar School, Gourdon School, Glenbervie School, Johnshaven School, Kinneff School and Mill o' Forest School.

### **Contact Details – Cults Academy**

Cults Academy

Quarry Road

Aberdeen

AB15 9TP.

Telephone Number: 01224 86880

The schools which send pupils to Cults Academy are part of a Cluster. The other schools within the Cluster are Culter, Cults and Milltimber.

### **Transitions Between Stages**

For some children, the thought of moving onto their next class/teacher can also be an anxious time. Again, we have structures in place to support these transitions. Teachers share planning and work together on school improvement projects helping to ensure a commonality of expectations and approaches. Time is arranged for teachers to hand over information regarding the learning needs of the pupils transferring from class to class. Around June of each year “step up” time is also arranged where pupils can meet their next teacher and their classmates. Opportunities throughout the year for children to work on joint projects, e.g. enterprise challenges help to ensure that the children have opportunities to work with other staff and pupils.

If you have any particular concerns regarding transitions, please contact the head Teacher.

---



Visit Parentzone for more information about transitions:

<https://education.gov.scot/parentzone/my-child/transitions>

## **1 Admissions**

### **Nursery Admissions.**

Early in each calendar year, all parents/carers should complete an application form and submit this to the nursery of their choice. This can be your local school nursery or any other early learning and childcare setting within Aberdeenshire. The application form can be found here:

<http://aberdeenshire.gov.uk/schools/information/early-learning-and-childcareinformation/>

### **Primary Admissions**

New entrants to P1 are enrolled early in the calendar year for entry to school in August. This is for children who will be five on or before the school start date in August. Those that have their fifth birthday between the August start date each year and the end of February the following year, may also be admitted. Go to:

<http://aberdeenshire.gov.uk/schools/information/primary-school-registration/>

To view the school catchment area for your address, go to:

<https://aberdeenshire.gov.uk/schools/school-info/admissions/school-zones/>

## **2 Placing requests & School Zones**

For all advice and information on placing requests and guidance on school catchment/zones go to: <http://aberdeenshire.gov.uk/schools/information/choosing-a-school>

Your child would normally attend a school within the school catchment area (zone) close to where you live. However, you can request that your child attends a school in another zone (out of zone). Please follow the links for more info: [Out Of Zone Placing Request Policy & Procedures](#)

---

# Support for Children and Young People

## 3 Getting it Right for Every Child

Getting It Right for Every Child (GIRFEC) is the national policy approach in Scotland which aims to support the wellbeing of all children and young people, by offering the right help, at the right time, from the right people. Certain aspects of this policy have been placed in law by the Children and Young People (Scotland) Act 2014.

Aberdeenshire's Children's Services Planning Partners are strongly committed to fully embedding the Getting it Right for Every Child approach. This shared commitment is expressed through the vision statement of Aberdeenshire's Children's Services Plan, which Aberdeenshire's Schools play a key part in delivering:



Its vision is that:

***'Our commitment to Aberdeenshire's children and young people, is to provide them with the right support, in the right place, at the right time.***

***In helping them reach their individual potential and goals, we will work together to make Aberdeenshire the best place in Scotland to grow up'***

You can find out more about our Children's Services Plan at:

<http://www.girfec-aberdeenshire.org/who-we-are/our-childrens-services-plan/>

## 4 Wellbeing

The Getting it Right approach is reflected in agreed local processes for assessing need and planning support for individual children and young people. In

---

Aberdeenshire, we have a strong ethos of partnership working, with a shared sense of professional accountability for improving the wellbeing of children, young people and families.

Getting it Right for Every Child (GIRFEC) is about safeguarding, supporting and promoting children and young people's wellbeing and ensuring support is provided if, and when, this is needed. GIRFEC is:

- Child-centred
- Holistic
- Accessible and responsive
- Joined up
- Rights-based

The concept of Wellbeing is at the heart of the GIRFEC approach and is defined in Part 18 (s96) of the Children & Young People (Scotland) Act 2014, through eight Wellbeing Indicators. These Wellbeing Indicators reflect the Scottish Government's aspiration for all Scotland's children and young people to be Safe, Healthy, Achieving, Nurtured, Active, Respected, Responsible and Included.

- These 8 Wellbeing Indicators need to be met in order for children and young people to grow and develop into confident individuals, effective contributors, successful learners and responsible citizens



The Getting It Right approach means services will work in partnership with children, young people and their parent/carer(s) and we want every child at our school to feel happy, safe and supported to fulfil their potential.

## 5 Children's Rights

Every child/young person has rights in addition to human rights. These are called Children's Rights, and they're written in the United Nations Convention on the Rights of the Child. They outline what children need to give them the best chance of growing up happy, healthy and safe. Adults such as parents, schools, councils and governments have a responsibility to make sure that children access their rights.

---

The United Nations Convention on the Rights of the Child is a statement of children's rights. It has 54 articles that cover all areas of a child's life and it sets out the political, civil, economic, social and cultural rights that all children are entitled to.

UNCRC is now firmly embedded in Scots Law. This will ensure that rights are binding rather than guiding and all levels of government must apply the rights in legislation, policy and practice.

Children and young people are learning about these rights in school and some schools take part in The Rights Respecting Schools programme, a UNICEF accredited programme to support schools in developing rights-based practice as part of the school ethos.

In our schools we will:

- Raise awareness of Children's Rights, and how rights can be accessed
- Ensure Children's Rights are provided and protected by the adults who support our children and young people
- Provide a variety of opportunities for children and young people to get involved in decision-making
- Make sure children and young people's views influence how we develop services
- Support children and young people to express their views
- Listen to and act on children and young people's views on what we do well, and what we could do differently



More information for parents on Children's Rights can be found here

[Parent Club Children's Rights leaflet.pdf](#)

Aberdeenshire Council has endorsed a Children and Young People's Charter. You can find out more about Children's Rights and opportunities for participation at:

<http://www.girfec-aberdeenshire.org/home/children-and-young-people/>

---

## 6 The named person

Prevention and early-intervention are seen as key to the Getting It Right approach in achieving positive outcomes for children and young people. By providing support at an early stage, most difficulties can be prevented from escalating.

One way the Scottish Government has decided this should be taken forward, is by making a named person available to every child and young person in Scotland. From birth to prior to starting school, the named person Service is provided by your Health Visitor. The Education Service provides the named person Service for all children on entry to Primary One, until aged 18 (or beyond where a young person remains at secondary school). In Aberdeenshire the named person will be either the Primary Head Teacher or Deputy Head Teacher and in Secondary School the named person will be that young person's allocated Principal Teacher of Guidance (with a few exceptional circumstances).

The purpose of the named person role is to make sure children, young people and parents have confidence that they can access help or support no matter where they live or what age the child is. Acting as a central point of contact, the named person can help children, young people or parents/carers get the support they need if, and when, they need it.

The named person can help by:

- Providing advice, information, or support
- Helping a child, young person, or to access a service or support
- Discussing or raising a wellbeing concern about a child or young person.
- Being a key contact point for other professionals if wellbeing needs are identified for a child or young person.

There is no obligation for children and young people or parents to accept any offer of advice or support from the named person. Non-engagement with a Named Person is not in itself a cause for concern. The named person Services are currently delivered on a national policy basis.

For more information you can contact your child or young person's named person directly, or go to:

<https://www.gov.scot/policies/girfec/named-person/>

The Named Person for your child/young person is the Head Teacher (P1-P7)

---

## 7 The Child's Plan

The *Getting It Right* approach makes sure children and young people are provided with a range of support, which is proportionate and put in place to meet assessed need. This is reflected in Aberdeenshire's staged approach to assessment and planning for individual children and young people, shown below.

- Universal Services (Core Provision)
- Universal Services (Support Generally Available)
- Universal Services (Targeted Support) Targeted and Specialist Services (Multi-Agency)



For a small minority of children or young people, there might be higher levels of wellbeing need or risk identified. These children may require a level of targeted support, which needs to be co-ordinated on a single or multi-agency basis through a Child's Plan.

Where a child or young person needs one or more targeted supports, the benefit of a Child's Plan will be discussed with them and their parents/carers. An assessment using the National Practice Model (My World Triangle/Resilience Matrix) would help to identify any wellbeing needs (*Safe, Healthy, Active, Nurtured, Achieving, Resected, Responsible, Included*) and highlights strengths and pressures in the child's situation. Families are fully involved as key partners in these discussions.

The Child's Plan will outline what action will be taken by the child, their family and professionals, and detail how these supports aim to help improve the child or young person's Wellbeing and overcome any difficulties.

A Lead Professional will be identified to co-ordinate and manage a multi-agency Child's Plan.

Information is available on the Aberdeenshire *Getting It Right for Every Child* Website:

<http://www.girfec-aberdeenshire.org/>

---

## 8 Educational Psychology

The Educational Psychology Service (EPS) provides a service across Aberdeenshire from the early years to school leaving age.

When there are concerns about a child or young person's learning or wellbeing an Educational Psychologist can support others to assess needs and problem solve their way through potentially difficult and complex situations. Consultation with people who know the child best forms the basis of Educational Psychology assessment. The purpose is to explore and understand the concern and support people to come up with solutions that will work in that particular context. More information about consultation can be found on the Educational Psychology Service website:

<https://blogs.glowscotland.org.uk/as/aberdeenshireeps/about-us/>

The website also has a range of helpful resources available for all parents:

<https://blogs.glowscotland.org.uk/as/aberdeenshireeps/parent-information/>

## 9 Universal Inclusive Offer to all Children and Young People

Aberdeenshire Council is committed to children and young people being educated within their local mainstream school. Education staff work with the families of children with additional support needs to identify their needs and agree the adaptations that are required to meet those needs. This may include, for example, curricular adaptations, teaching and learning approaches, support strategies, environmental adaptations, communication requirements, specialist equipment or staff undertaking professional learning.

All Aberdeenshire Schools take a solution-focused approach to overcoming any barriers to inclusion. They seek advice and support from relevant Education Support Services and multi-agency partners as appropriate.

A whole school inclusive approach embeds practices in the everyday life of a school that are known to be effective in supporting pupils with additional support needs. These practices often also benefit other learners who do not have additional support needs. There are a number of whole school inclusive approaches that are being implemented in all Aberdeenshire schools as part of our universal offer to all children and young people. These include:

1. The CIRCLE Resource to support inclusive learning & collaborative working.
  2. Play Based Learning Approaches and Playful Pedagogy.
  3. Staff who have the knowledge and skills required to understand and support autistic learners.
  4. Staff who adopt dyslexia friendly approaches and who are able to identify and respond to difficulties that pupils with dyslexia may encounter.
  5. Staff who are trauma informed and adopt nurture approaches to sensitively support children who may have experienced trauma or adversity.
  6. A supportive and effective communication environment which uses every means of communication available to ensure learners understand and can be understood.
  7. Use of restorative approaches to restore and maintain good relationships when there has been conflict and harm.
-

8. Staff who are culturally responsive, aiming to connect pupils' cultures, languages and life experiences with what they learn in school

## 10 Support for Learning

Children and young people may require support for learning at some point in their lives for a range of reasons. Some children may need a lot of support all the way through school. Others may need only a small amount for a short time.

A child or young person has additional support needs if, for any reason, they need extra or different help than others their age to benefit fully from their education.

Reasons for requiring support might include:

- Missing school because of an illness or long-term condition
- Having a physical disability
- Being a young carer
- Communication difficulties
- Being particularly able
- Changing school a lot
- Being looked after or care experienced
- Difficulty in controlling behaviour
- Having a difficult family situation
- Suffering a bereavement
- Social and emotional factors

Each school cluster has an allocation of Teachers of Additional Support for Learning (ASL) who are employed to support pupils with additional support needs. They work across each cluster in primary and secondary in partnership with school staff, parents and other professionals (if appropriate). They identify barriers to learning, assess children's needs and support learning and teaching through a relevant curriculum.

Pupil Support Assistants (PSAs) assist teachers in promoting achievement and raising the standards of pupil attainment. They provide general support in relation to the needs of the class and individuals' care, health and wellbeing and safety and to promote a secure and safe environment.

## 11 Enhanced Provision and Complex Need Provision

Aberdeenshire Council is committed to meeting the additional support needs of children and young people in their local mainstream school. Planning starts an exploration of what steps need to be taken for their local school to be ready to welcome them. This includes consideration of, for example, curricular adaptations, teaching and learning approaches, support strategies, environmental adaptations, communication requirements, specialist equipment or staff professional learning needs.

---



All 17 Academies are Enhanced Provision Schools, and there is a dedicated Primary School within each of Aberdeenshire's 17 school clusters. Enhanced Provision Schools have enhanced staffing and resources to meet additional support needs. Some children may require outreach support from the Enhanced Provision to ensure their needs are fully met in their mainstream setting. This may involve advice and consultation to staff, or direct support to the pupil from, for example, an Enhanced Provision Outreach Practitioner, Pupil Wellbeing Worker or Nature Nurture Practitioner. Some children and young people will require more targeted support through an Enhanced Provision place. This involves them physically attending the Enhanced Provision on a full-time or part-time basis. Such placements are offered from Primary 3 upwards.

A very small number of children and young people will require access to specialist staff and resources beyond that which can be provided within a mainstream or enhanced provision setting due to the significance and complexity of their learning needs. Aberdeenshire's Complex Needs Provision includes four Special Schools and five Provisions which are integrated within mainstream settings (often referred to as Integrated Complex Needs Provision). Both types of Complex Needs Provision meet significant and complex learning needs, with pupils accessing the Complex Needs Provision which their home address is zoned to.

For more information on all our resources and policies go to:

<http://asn-aberdeenshire.org/>

## 12 Child Protection

Child protection is the responsibility of all who work with children and families regardless of whether or not they come into direct contact with children. All staff must be fully informed of their responsibilities with respect to keeping children safe. All services working with children, young people and families are expected to identify and consider the wellbeing of children and to share concerns appropriately. Our Child Protection processes uphold children's rights.

In Aberdeenshire we recognise that physical and emotional safety provides a foundation for wellbeing and healthy development. The Aberdeenshire's Child Protection in Education Guidance is based on the [National Guidance for Child Protection in Scotland 2021- updated 2023, and provides guidance for school based staff on protecting children and young people.](#)

### **Equal Protection from Assault (Scotland) Act 2019.**

The Children (Equal Protection from Assault) (Scotland) Act 2019 provides children with the same rights as adults against assault by a parent or person with charge or care of them.

Within our school we have a designated member of staff appointed to be responsible for Child Protection matters. If there is the possibility that a child could be at risk, the school is required to follow the Child Protection Procedures laid out for Education.

This may mean that the child is referred to Social Work, the Police or the Children's Reporter. In our school **the designated staff are:**

Remember – if you suspect a child is at risk, do not rely on someone else to notice.

---

If you would like to speak to someone, seek help or pass on information or concerns:

You can speak to designated staff in our school

Social Work Monday to Friday during office hours contact your Children & Families local [Social Work Office](#)

Evenings & Weekends call the Out of Hours Service on 03456 08 12 06

Police Emergency 999, Non-Emergency 101

Signs of abuse can range from poor personal hygiene and hunger to unexplained injuries or self-harm.

If a child or young person tells you they are being abused:

- stay calm and listen to them
- never promise to keep it a secret – tell them you must let someone else know
- remind them that they are not to blame and are doing the right thing
- report it, but leave any investigation to Child Protection agencies

Protecting Aberdeenshire's children and young people is everyone's business, further information can be found on <http://www.girfec-aberdeenshire.org/child-protection/>

## **13 Further Information on Support for Children and Young People**

The following websites may be useful:

### **Getting It Right for Every Child (GIRFEC)**

<http://www.girfec-aberdeenshire.org/>

### **Aberdeenshire Council**

<http://www.aberdeenshire.gov.uk/schools/additional-support-needs/>

### **Support for All**

<https://www.education.gov.scot/scottish-education-system/Support%20for%20all>

### **Enquire – National Parent Information Service and Helpline**

<http://enquire.org.uk/>

---

# Parent & Carer Involvement and Engagement

*The term “parents” refers to anyone with parental responsibilities and others who care for or look after children or young people.*

Both globally and nationally it is recognised that parents are the single most important influence on their children’s development, learning and achievement. The involvement and engagement of parents in their children’s learning is recognised as a key element in raising attainment, through support, help and encouragement given at home and whilst at school.

## 14 Parental Involvement and Engagement Strategy

The Parental Involvement and Engagement Strategy demonstrates the commitment by Aberdeenshire Council to improve the quality and the extent of all parents’ involvement in their child’s learning and the important role they play in their child’s education.

The plan sets out a vision for parental involvement and engagement for the next three years and covers a journey that a child takes from pre-birth to age 18. It highlights the leadership of those who make the difference day in and day out.

<http://publications.aberdeenshire.gov.uk/dataset/parental-involvement-andengagement-strategy-and-action-plan/resource/02c6596e-8cba-42c7-b28aeed64086ea42>

## 15 Parental Engagement

Parental engagement is about parents’ and families’ interaction with their child’s learning. It can take place in the home, at school or in the community: where it takes place is not important. The important thing is the quality of the parent’s engagement with their child’s learning, the positive impact that it can have and the interaction and mutual development that can occur as a result of that interaction.

## 16 Communication

The school uses a range of approaches to share information about your child’s learning and progress. These include:

- Use of Groupcall email
  - School email
  - Social Media: Twitter @lairhillockps
-

- Google Classroom
- Newsletters
- Events
- Open days/mornings/afternoons
- Formal and informal meetings
- End of year report

## 17 ParentsPortal.scot

In support of Aberdeenshire Council's ambition to offer more digital services to its residents, Aberdeenshire primary and secondary schools are rolling out a new national online service called **parentsportal.scot**. This is designed to replace the paper 'schoolbag run', giving a child's registered contacts access to a range of school-related online services, 24 hours a day, 7 days a week.

At the heart of the system, is a secure account through **mygov.scot**, which is referred to as '**My Account**' or '**MyAberdeenshire**' account. 'MyAberdeenshire' is already used to allow parents/carers to make online payments or receive notifications if a school closes unexpectedly. **Parentsportal.scot** and '**MyAberdeenshire**/'**mygov.scot** will work together, making this a convenient onestop-shop, to access all Aberdeenshire digital services.

Initially, **parentsportal.scot** will allow parents/carers to see basic information about your child(ren)'s school and twitter account as well as:-

- make a link to your child(ren)
- complete the annual data check process electronically (child's main contact only)
- update their own as well as your child(ren)'s details at any time
- to register and access for online school meal payments using one sign in (iPayImpact)

**How do I sign up?** - If you **already have a myAberdeenshire account** to pay for school meals through iPayImpact, you can sign up using the same sign in details at <https://parentsportal.scot/home/> You **do not need** to register or set up a new **mygov.scot** account.

If you do not have a myAberdeenshire/mygov.scot account or are looking for more information and videos on how to access to **parentsportal.scot**, please go to <https://www.aberdeenshire.gov.uk/schools/school-info/parents-portal/>

## 18 Learning at Home

Learning at home is the learning which happens in the home, outdoors or in the community. Home is the beginning of a child's learning journey. Your home is a great place to support learning. Your child can try out new activities or practice familiar learning, at home and in their wider community.

---

At our school we provide materials for you to work with your child to develop key skills at home.

## 19 Parent Forum and Parent Council

The Parent Forum is a collective name for all parents, carers, and guardians in the school.

The Lairhillock Parent Council is a group of parents selected by the Parent Forum to represent the views of all parents, carers, and guardians in the school. The Parent Council works with the school to support learning and teaching, school improvement and parental and community engagement.

Contact the Parent Council Chairperson, or the Head Teacher for more information about getting involved in the Parent Council or email:

**lairhillockparentcouncil@gmail.com**

## 20 Parents and School Improvement

Our school has a range of priorities that we work on each year which are explained in our School Improvement Plan (SIP). Parents often have helpful and creative ideas about how to improve their child's school and what can be done to improve the quality of children's learning. In our school we will consult with parents in a number of ways. These may include:

- working groups/focus groups which any interested parent is invited to be part of
- questionnaires and surveys
- consultation with the Parent Council

## 21 Volunteering in school

There are many opportunities for you to support learning in school. These may include:

- volunteering to share the skills and knowledge you have
- supporting children and young people in the classroom
- supporting or lead extra-curricular activities
- directly supporting with specific skills (paired reading for example) More

detail about this can be found using the link below:

<http://jobs.aberdeenshire.gov.uk/volunteer-with-us/> or contact your Head teacher.

## 22 Collaborating with the Community

We work with many local organisations, community groups and businesses to ensure our children and young people benefit from further resources, experiences, and opportunities. We have developed a relationship with the Storehouse Foodbank in Stonehaven, and now run regular Foodbank Fridays to support this wonderful initiative. If you are interested in working with the school, please contact the Headteacher.

---

## 23 Addressing Concerns & Complaints

Aberdeenshire Council recognises the vital role that parents play in supporting their child's learning and is committed to fostering positive relationships with parents. No matter how strong partnerships are, or how good our policies are, sometimes things can still go wrong and there may be occasions where parents wish to express unhappiness or dissatisfaction with council services, policies, or staff behaviour.

<http://aberdeenshire.gov.uk/contact-us/have-your-say/have-your-say-guide/>

When a complaint is made it must be handled in accordance with the Complaints Handling Procedure which provides two opportunities to resolve issues internally. In order to maintain positive relationships, it is usually better for all if parental concerns or complaints can be resolved at school/ early years setting level as quickly as possible.

If a concern or complaint cannot be resolved at frontline resolution (Stage 1) then it will progress to Investigation (Stage 2) and a detailed investigation into the matter will be carried out. Complaints that are complex, serious, or high risk and require detailed, lengthy investigation may be dealt with at the Investigation Stage from the outset.

Once the two internal stages of the Complaints Handling procedure have been exhausted, the complainant must be directed to the Scottish Public Services Ombudsman (SPSO) to carry out an independent external review of the process. The SPSO is the final stage of the complaint procedure.

Once the SPSO reaches a decision they may contact the council with recommendations for improvement and will provide dates by which the recommendations must be implemented. The council is required to report back to the SPSO and evidence that the required action has been taken.

# School Policies and Useful Information

School Policies are available to all parents on request.

All Aberdeenshire Council Education policies can be found here:

<http://www.aberdeenshire.gov.uk/council-and-democracy/about-us/servicestructure/education-and-childrens-services-policy-framework/>

---

## 24 Attendance

### What pupils need to know:

- If you arrive after the bell has rung, you will need to enter the school by the main entrances
- We need permission from your parents for an absence from school
- If you feel ill, tell your class teacher and ask permission to report to the school office.

If appropriate, office staff will arrange for you to be collected from school.

### What parents needs to know:

Parents are asked to assist school staff in the manner detailed below:

- If your child is unable to attend school through illness/other reason please telephone the school office between 8:30am and 9:30 am on the first day of his/her absence or send a signed note via a brother or sister where applicable.
- If your child is home for lunch and becomes unwell at lunchtime making them unable to return to school in the afternoon, please telephone the school before the beginning of the afternoon session to inform a member of staff.
- When you contact the school it would be helpful if an indication could be given as to the child's expected length of absence from school.

On your child's return to school a note should be provided explaining the reason for absence and confirming the periods of absence from the school. The note should be signed and dated.

The school follows the Aberdeenshire Promoting and Managing Pupil Attendance in Education Establishments Policy and Guidance. The links for these can be found below

[Promoting and Managing Pupil Attendance in Education Establishments policy](#)

[Promoting and Managing Pupil Attendance in Nursery, Primary and Special Schools Guidance](#)

Safeguarding is a number one priority for the school and the monitoring of daily absence is an important part of this. To support the school with this, and to ensure that all children and young people are safe and accounted for, it is essential that parents and carers contact the school to inform them of their child's absence.

The school is required to follow up on unexplained absences on a daily basis. Where no information is received about a pupil absence at a certain point in the school day, the school will call the main parent contact and where necessary, they will call any emergency contacts that are held on the school system for that child.

Where no contact can be made and it is therefore not possible for the school to confirm that a child or young person is safe and well, it may be necessary to contact other agencies such as Social Work and Police for support. To minimise the need

---

for this, please contact the school to explain any absence, either prior to, or on the day of the absence

## **25 Holidays during term time**

The Scottish Government has deemed that holidays taken during term time for primary and secondary children should be recorded as unauthorised absence unless there are special, exceptional circumstances. Should you wish to remove your child from school to attend a family holiday you must inform the Head Teacher. This will be recorded as unauthorised absence though there may at times be exceptional family circumstances previously discussed with the Head Teacher. Parents are advised to limit the number of holidays taken during term time, to minimise disruption to a child's education. For annual holiday dates for Aberdeenshire schools please see the section at the back of this book, contact the school office or go to:

<http://www.aberdeenshire.gov.uk/schools/parents-carers/school-term-dates-and-in-service-days/>

## **26 Dress Code**

At Lairhillock School we hope to develop, in children, a sense of identity and belonging to our school community. One way of doing this is to encourage them to wear our school uniform which consists of sky blue polo shirts, navy sweatshirts, fleeces and jackets. A sky blue T shirt should be worn by P1-7 children for PE. Orders for school uniform are sent to our supplier in November and May. However, a small number of these items are available to be purchased from the school office throughout the term. We can also provide 'nearly new/recycled' sweatshirts for parents who would wish to make use of these.

Dark coloured trousers, shorts, skirts and shoes should be worn. Children require a pair of indoor shoes to wear in school. These should have non-marking soles and should be suitable for the children to take part in activities in the hall e.g. PE, drama

Nursery children are encouraged to wear nursery sweatshirts. These too can be purchased through the school office.

Children should be sent to nursery and school with appropriate outerwear and footwear to suit the time of year. During morning break and lunch break, P1-7 children will be expected to play outside unless the weather is excessively bad.

### **PE Clothing**

Children should wear T-shirt which tucks into shorts, standard length shorts, socks, indoor gym shoes (preferably with Velcro or elastic fastening for younger pupils) and/or outdoor trainers (depending on the time of year), all kept in a gym bag, No jewellery is permitted during PE lessons. If a child has had his/her ears pierced, the studs should be covered with surgical tape for safety. Long hair should be tied up.

### **Painting Overalls**

Children should wear painting overalls to protect their clothes during art and design activities. An old shirt is ideal.

---



The school requests that football team tops and designer garments are kept for home use as these can provoke conflict amongst the pupils.

#### School Policies and Useful Information

Parents are encouraged to ensure all clothing and belongings brought to school should be named or marked in some way, as it is difficult for children to distinguish their own clothing from that of others.

## 27 Clothing Grants

Some families may be entitled to a school clothing grant per eligible child per financial year. More information about this can be found at:

<http://www.aberdeenshire.gov.uk/schools/parents-carers/assistance/school-clothinggrants/>

## 28 Transport

To qualify for free Home-to-School Transport, Primary school pupils must reside more than 2 miles from and attend their zoned school whilst Secondary school pupils must reside more than 3 miles from and attend their zoned school.

These distances are the shortest available route from the pupil's house to the school gate and can take into account main roads (including dual carriageways), tracks and paths. Pupils will be assigned a collection point, in villages and towns and where safe to do so, pupils may have to walk up to 1 mile to the nearest collection point. Pupils who reside in rural locations are usually collected at the nearest adopted road to them (track end or roadside). School transport vehicles will not use private unadopted roads or tracks. It is the parent's responsibility to escort the pupil to and from their collection point. Application forms for free transport, Form PTU100 can be obtained from the school office.

## 29 Privilege Transport

Transport provision is also made available for pupils who are not ordinarily entitled to transport. Privilege transport is provided on school transport services subject to spare seating capacity. There are 3 types of privileged transport available.

### In-zone Privileged transport

Pupils who attend their zoned school but are under the qualifying mileage can apply for In-zone privilege transport. If there is suitable seating capacity available and an existing route then the application should be approved, if there is not and there is a safe walking route available to the pupil, then it may be rejected. Please also note that if seating capacity is needed for a pupil who is entitled to school transport, Inzone Privilege pupils may be give written notice and removed from transport.

### In-Zone Privilege Transport – Safety

---

Pupils who attend their zoned school but do not qualify due to their residence being under the qualifying mileage can apply for In-zone privilege transport. If there is no safe walking route available to the pupil, they are guaranteed a seat on transport by applying for an In-zone Privilege pass. A pupil who is guaranteed in-zone privilege transport would not be removed to make room for a pupil who is entitled to school transport.

### **Out of Zone Privilege Transport**

There is no transport entitlement to pupils who attend a school which they are not zoned for. Pupils may apply for Out of Zone Privilege transport; pupils are required to meet the nearest available school transport vehicle to them, and it is the parent's responsibility to bring the pupil to the nearest collection point. Out of Zone Privilege transport pupils may be removed, with written notice, at any time for In-Zone Privilege and Entitled transport pupils.

Application forms can be obtained directly from your child's school. For further information, see the Council website:

<https://www.aberdeenshire.gov.uk/roads-and-travel/school-transport/schooltransport/>  
or contact: [school.transport@aberdeenshire.gov.uk](mailto:school.transport@aberdeenshire.gov.uk)

### **Local Bus/Registered School Bus Services**

Some services operate as registered bus services. These operate on a fare paying basis and pupils will be required to pay fare to the driver or purchase a season ticket for travel.

## **30 Early Learning & Childcare Transport**

Transport to early learning and childcare settings will not be provided by Aberdeenshire Council, unless there are relevant exceptional circumstances. Where there are significant additional support needs, transport may be provided. In such instances this requirement should be discussed with the Head Teacher in conjunction with the Early Years Quality Improvement Manager.

## **31 Enhanced Provision and Complex Needs Provision**

Aberdeenshire Council may provide free transport where necessary for pupils with additional support needs who access Enhanced Provision or Complex Needs Provision level support. In certain cases, it will be appropriate for pupils to make their own way to school by public transport and where this is authorised, bus passes are issued. Where a pupil's address falls in the delineated area of a resourced school, and is within reasonable walking distance, the Local Authority will consult with Specialist Health Services before deciding if free transport should be provided

## **32 School Closure & Other Emergencies**

Head Teachers decide if and when schools should close due to bad weather or another emergency. In bad weather they will decide this after receiving information

---

about local weather conditions. This decision can be made during any time, day or night. These guidelines outline the procedures for dealing with school closures during bad weather or other emergencies.

***If children are at school...***

*School transport contractors* have been told not to allow children to walk home alone from drop-off points under any circumstances during extreme weather conditions. If you can't meet or arrange for your child to be met, the school transport will return them to a designated location.

**Public service vehicles** – drivers of these vehicles follow a specified route and keep to timetables – they cannot make special arrangements.

If your child attends a Nursery, Primary or Special School, which is to close early, the school will contact you by telephone. If this is not possible the school will contact your named 'emergency contact'. No child will be released from school without contact being made. It is important contact details are current and the people named are available – particularly during bad weather.

If your child attends a Secondary School, because of the large number of pupils in Secondary Schools, parents will be contacted via text/email to inform them of closure.

If you are concerned about local weather condition contact the school. You may wish to collect your child yourself and are free to do so provided you make arrangements with the school.

***Before the start of the school day...***

During bad weather some staff may not be able to get to school or bus routes may not be safe to travel on – so the school may have to close. Headteachers will advise parents and carers using the following communication tools:

Outwith school hours, your local radio station is a good place to find out information on school closures. The following radio stations receive updated from our website:

- **Northsound 1** FM 96.9
- **Northsound 2** MW 1035 kHz

Parents can access information about school closure from the following website:

[School closures and transport changes - Aberdeenshire Council](#)

### **33 Storm Addresses**

When there has been severe snowstorm during the day it may be prudent for pupils who live some distance from the normal bus routes not to attempt to reach their homes but to spend the night in alternative accommodation nearer school. It is the parent's responsibility to inform school about any pupils who may be at risk in such situations and to provide the name and address of a relative or friend who is willing to provide overnight accommodation.

---

## 34 Change of address and Parental Contact Details

To enable us to make easy contact with parents, the school would appreciate if any changes of address, telephone number or circumstances is amended via your parentsportal.scot account (see Menu section 'Your Account') or notified in writing to the School Office. It is also important that the school has details of an Emergency Contact should it prove impossible to get in touch with parents in the event of an emergency.

# Anti-bullying Guidance

## What is Bullying?

Aberdeenshire Council Education and Children's Services define bullying as the following:

**Bullying takes place when the actions of an individual or group of people cause harm to someone by taking advantage of an imbalance of power within a relationship (whether perceived or real). Bullying behaviour can be persistent and/or intentional, but often it is neither.**

**Bullying can be verbal, physical, mental/emotional, or cyber and is behaviour and impact. It can be intentional or unintentional, direct or indirect, persistent, or a one-off incident. The impact is on a person's ability to feel in control of themselves.**

**Bullying can be verbal, physical, emotional, or cyber. It can be intentional or unintentional, direct or indirect, persistent, or a one-off incident. People who experience bullying behaviour feel vulnerable and/or socially isolated.**

## What will the school do about it?

Schools should promote consistency of response to instances of bullying behaviour using a 6-step approach. They will:

1. Record **all** reported incidents of bullying
2. Speak to the individuals involved having frank and honest dialogue
3. Speak to parents/carers
4. Utilise Restorative approaches
5. Monitor the situation
6. Review and increase response accordingly

More information can be found in the [Aberdeenshire Anti-Bullying Policy: Bullying Prevention and Management for Educational Establishments](#) which adheres to the National Approach to Anti-Bullying which can be found at <https://www.gov.scot/publications/respect-national-approach-anti-bullying-scotlands-children-young-people/>

---

## 36 School Meals

### Primary School Lunches

Lunch time is an important aspect of the school day. Not only does it provide children with a nutritionally balanced meal, it enhances their social and personal development.

### How does my child choose their lunch?

In class first thing in the morning children select their meal using the Smart Board. Meal options are displayed, and a choice is made by touching the chosen option shown on the Smart board. The teacher will explain to children the menu options available on the day, but it is helpful for parents of the younger children to discuss this with them before they arrive in school.

The School Catering Service provides good value meals at our schools using carefully sourced quality ingredients. There is always a wide selection of options available from the menu. The menu and helpful information can be found via this link <https://www.aberdeenshire.gov.uk/schools/school-info/meals/primary-school-meals/>

### Children with medically prescribed dietary requirements

Parents should be aware that they can access special dietary support information by viewing <https://www.aberdeenshire.gov.uk/schools/school-info/meals/primary-schoolmeals/> to access OurShireMenus content portal.

Children who require medically prescribed dietary support, with parental/guardian assistance, should be identified during the admission process. Procedures are set in motion to offer support for these children by completing Admission Form D available from the school administration office. The School Management Team and the Catering staff will be happy to discuss your requirements. In the meantime if you require dietary information, please email [medicallyprescribeddietarysupport@aberdeenshire.gov.uk](mailto:medicallyprescribeddietarysupport@aberdeenshire.gov.uk).

### Special Events and Celebrations

The children enjoy eating together and we encourage learning and wellbeing during lunchtime. Occasionally we celebrate special dates and encourage all children to participate.

If your child is going along on a school trip the school catering service can provide a nutritious packed lunch for the occasion and this includes children who qualify for free school meals.

### How Much does a Primary School Meal Cost?

The current price of a Primary school meal can be found via the following link - <https://www.aberdeenshire.gov.uk/schools/school-info/meals/primary-school-meals/>

---

## **How do I pay for School lunches?**

Lunches are provided free of charge for pupils from P1 to P4. P5's will receive free meals from January 2022.

Paying for School lunches for is very easy to do online.

It is very important to keep this account in credit as failure to do so triggers a timeconsuming debt recovery process for the School and Catering service. We aim to support the wider Authority to be debt free and require your support in this by ensuring you top-up your account before sending a child for school meals.

### **Online payments system**

We are encouraging parents/carers to register for online school payments due to COVID-19 to eliminate handling of cash. Parentsportal.scot is the recommended way to register to access all school payments including school meals.

Parentsportal.scot is securely linked to a myAberdeenshire account and to register follow this link <https://www.aberdeenshire.gov.uk/schools/school-info/parents-portal/>

If you are having difficulty making payments, please contact the school office as we are here to support families and will do whatever we can to assist you.

### **Free School Meals Information**

Am I entitled to free school meals?

Click on the link to find information that explains the free school entitlement and how to go about it. [Free School Meals](#)

If you have difficulties obtaining access to free school meals, please speak with your school and we will work together to provide assistance.

If you require any further information regarding School Catering send a message to this email address - [schoolmeals@aberdeenshire.gov.uk](mailto:schoolmeals@aberdeenshire.gov.uk)

## **37 Healthcare & Medical**

Every child's health and welfare is very important to the school. Parents who have any concerns should let school know by telephoning or writing in. Alternatively, parents can inform the Health Visitor or their own GP. Parents are requested to let the school know of any hospital appointments.

Parents/carers are requested to keep children at home for 24-48 hours if the child has diarrhoea, flu-like symptoms or is clearly unwell.

Always seeks a GP's advice before sending a child back to school. Please remember that other children can be vulnerable to infection.

All pupils must be registered with a doctor in general practice who should be consulted about health matters as they arise. Parents should provide us with the name and telephone number of their child's doctor and an up-to-date emergency contact for themselves in case it becomes necessary for a child to be sent home during school hours because of illness.

---

Aberdeenshire Community Dental Service inspect P1 and P7 children in schools as part of the National Dental Inspection Programme. Written parental consent is not required for dental inspections, but parents will be informed in writing approximately one week before the inspection date.

Most pupils will at some time have a medical condition that may affect their participation in school activities. For many this will be short term, perhaps finishing a course of medication to combat an infection.

Other pupils have medical conditions that, if not properly managed, could limit their access to education. Such pupils are regarded as having health care needs. Most children with health care needs can attend school regularly and, with some support from the school can access most school activities. However, school staff may need to take extra care in supervising some activities to ensure that pupils are not put at risk.

Please find the link below to our guidance: Supporting Children and Young People with Healthcare needs and managing medicines in Educational Establishments.

<https://asn-aberdeenshire.org/policies-and-guidance/>

This guidance supports schools to identify the necessary safety measures to meet the medical needs of pupils in collaboration with NHS Grampian, ensuring pupils and others are not put at risk.

If your child has long term medical conditions such as asthma or diabetes, which may require on-going support, this should be fully discussed with the school. In certain cases specific training of staff about a child's treatment may need to be given. In addition, some children have conditions which may require occasional staff intervention e.g. severe allergic conditions such as anaphylaxis.

Sunscreen - As children are outdoors for learning and for play, parents should apply this prior to sending children to school or nursery. School staff do not supply, nor do they apply, sunscreen creams.

### **38 Exclusion**

The foundation for schools, learning establishments and education authorities is a whole school ethos of prevention, early intervention and support against a background which promotes positive relationships, learning and behaviour.

When a pupil displays behaviour, whereby attendance at the school would be likely to be seriously detrimental to order and discipline in the school or the educational wellbeing of the pupils there the Aberdeenshire Promoting Inclusion and Reducing Exclusion in Education Establishments Policy may apply.

<http://publications.aberdeenshire.gov.uk/dataset/council-policies-education/resource/9e393d1a-2113-44c8-afb6-a517f2d495b6>

### **39 Educational Visits**

We offer various educational visits during the school year. We believe that 'hands on' experiences greatly enhance a child's education, while also helping to make the necessary links between learning in school and life outwith school. Staff members and parent volunteers provide supervision to standards laid down by Aberdeenshire

---

Education & Children's Services. We give parents as much notification as possible regarding visits their children will participate in.

There are grants available through the Aberdeenshire Educational Trust to help with the cost of school trips. For further information go to:

<https://www.aberdeenshire.gov.uk/benefits-and-grants/educational-grants/>

## **40 Instrumental Tuition**

From Primary 4 onwards, tuition is available for a range of musical instruments. Most disciplines are taught in the secondary schools however not all disciplines are available in primary schools due to limited resources. Orchestral string instruments are not normally available to beginners at secondary level. Tuition is subject to availability.

### **100 days commitment: ending charges for instrumental music tuition in schools**

A commitment made in the SNP's 'First Steps' document and reaffirmed by the First Minister in Parliament on 26 May, was to abolish fees for instrumental music tuition in schools within the new Government's first 100 days. Ministers and COSLA Leaders have agreed to the initial one-year removal of fees For further information go to:

<http://aberdeenshire.gov.uk/schools/ims/>

## **41 Public Liability Insurance**

Aberdeenshire Council holds third party liability insurance, which indemnifies the Council against claims from third parties, e.g. parents on behalf of pupils who have suffered injury, illness, loss or damage arising from the negligence of the Council or its employees. In these circumstances all claims are handled on behalf of the Council by external Insurers and Claims Handling Agents and compensation is dealt with on a strict legal liability basis. This means that there is no automatic compensation, the Council must be found negligent in order for any compensation to be offered by our Insurers and / or Claims Handling Agents.

Whilst the school will exercise reasonable care for pupils' property, it is inevitable that property will be lost or damaged from time to time. Pupils' property which is worn or brought to school or left in bags/cloakrooms is at their own risk. This includes but is not restricted to personal items such as jewellery, phones/tablets watches and bicycles. Aberdeenshire Council cannot accept responsibility for loss or damage unless caused by negligence of the school or staff.

## **42 School Off Site Excursion Insurance**

Aberdeenshire Council has in place a School Excursion Insurance policy, whereby both pupils and teachers are covered for offsite activities / trips both within the UK and abroad (offsite meaning off the school premises). The policy covers medical expenses, loss of baggage, cancellation (as specified in the policy) , curtailment and

---



change of itinerary (along with other sundry benefits) etc. for worldwide trips and adventurous activities (including winter sports), subject to policy terms and conditions being met.

If personal items such as jewellery, phones/tablets, watches etc. are taken on a school trip then these are taken at an individual's own risk and are not covered under the policy, unless damage or loss is caused by an Aberdeenshire Council employee.

Personal / individual cover is seen as a parental responsibility and it is your decision as to whether you feel it is appropriate to obtain this.

Where trips are booked and have subsequently to be cancelled because of any Covid related event then insurance will not be valid. This will of course be reviewed periodically.

**Please be advised, however, that the Duty of Care aspect below is not insurance related:**

### **Duty of Care**

The Authority has a duty of care in respect of pupils in its charge during school hours and as such must take reasonable steps to ensure the safety of all primary and secondary pupils. This general duty of care continues if the children go home by way of school transport and ends when the child gets off the bus, at which point the parents then become responsible.

## **43 Data we hold and what we do with it.**

The UK's Data Protection Act (DPA) 2018 enacted the EU GDPR's requirements into UK law and, with effect from 1 January 2021, [the DPPEC \(Data Protection, Privacy and Electronic Communications \(Amendments etc\) \(EU Exit\) Regulations 2019](#) amended the DPA 2018 and merged it with the requirements of the EU GDPR to form a new, UK-specific data protection regime that works in a UK context after Brexit as part of the DPA 2018 and is known as the 'UK GDPR'.

Aberdeenshire Council is committed to full compliance with these regulations. When you are asked for information by Education & Children's Services, we will tell you why we are collecting the information, how long we will hold it and the legal basis for gathering this information. A Privacy Notice has been issued to all schools relating to the information we hold on yourself and your child/ward.

## **44 The information we collect from you**

Aberdeenshire Council collects personal data and information about your child in order to provide your child with a school education.

We will normally only share information (other than in child protection situations) in order to provide services for your child as part of his/her school education. We collect special category data about your child and process this because it is in the substantial public interest.

---

The information held by Aberdeenshire Council is used to assess, plan, coordinate, deliver, and quality assure the education services to your child. The Council does not use an automated process for making decisions about your child or the services required; decisions are made with you. We will keep this information for a period of 5 years from the maximum school leaving age of your child, as required to by The Pupils' Educational Records (Scotland) Regulations 2003, unless we have a legal responsibility to keep the information for a longer period of time.

## **45 Your Data, Your Rights**

You have legal rights about the way the Council handles and uses your data. More information about all of the rights you have is available on our website at:

<https://www.aberdeenshire.gov.uk/online/legal-notices/data-protection/>

Alternatively you can contact the Council's Data Protection Officer by emailing [DataProtection@aberdeenshire.gov.uk](mailto:DataProtection@aberdeenshire.gov.uk) or in writing to: The Data Protection Officer, Town House, 34 Low Street, Banff, AB45 1AY.

You also have the right to make a complaint to the Information Commissioner's Office, ([www.ico.org.uk](http://www.ico.org.uk)). They are the body responsible for making sure organisations like the Council handle your data lawfully.

The Council is required, where it is the data controller, to act in a transparent manner by providing information to individuals about how it will collect and use their personal data. Privacy Notices are an essential part of complying with this requirement. The Privacy Notice must provide information to individuals in a concise, transparent, intelligible, and easily accessible way and must be written in clear and plain language. All Education & Children's Services Privacy notices are available on our website at:

<http://publications.aberdeenshire.gov.uk/dataset/education-privacy-notices>.

## **46 Parental Access to Records**

Access Requests are the formal process by which individuals can seek information held about them (or their children) by the council. The requests can be broad, in terms of everything that is held, or quite specific - everything held by a specific department, establishment, team or individual. We have a legal requirement to provide the information under the Data Protection Act 2018. An Access Request is wider than an Educational Record in that it will include all personal data held about a child not just their educational record. Further information can be found at:

<https://ico.org.uk/your-data-matters/>

The Pupils' Educational Records (Scotland) Regulations 2003 means that you can get access to your child's records. Details of the regulations and process for obtaining information specific to pupils are available by contacting the school directly or can be found at:

<https://education.gov.scot/parentzone/my-school/general-schoolinformation/My%20child's%20record>

---

## 47 Information Sharing

In terms of effective communication, including sharing relevant and proportionate information, where appropriate, Aberdeenshire Council in accordance with the Data Protection Act 2018 and Human Rights Act 1998 adheres to this as part of our current routine practice.

## 48 ScotXed

ScotXed is a term used to represent the Scottish Government's Education Analytical Services, which is part of the Scottish Government's Learning Directorate. ScotXed have legal powers to request data with regards all children and young people being educated in Scotland's schools, with the information collected about pupils and staff in schools used to help to improve education across Scotland. They do not collect the names of your child/children and they do not receive any contact details the school may have for you (e.g. telephone number, email address), and no information is published or made publicly available that would allow your child/children to be identified. More information on what and why they need data about your child/children, along with how they collect and store it is available in their Education Statistics Privacy Notices for parents and carers:

<https://www2.gov.scot/Topics/Statistics/ScotXed/SchoolEducation/ESPrivacyNotices>

If you have any concerns around the national ScotXed data collections, you can:

- Contact the Data Protection & Information Assets team at the Scottish Government on [dpa@gov.scot](mailto:dpa@gov.scot), or
  - The Head of Education Analytical Services, Mick Wilson, on at [mick.wilson@gov.scot](mailto:mick.wilson@gov.scot),
  - You can write to them at Education Analytical Services, Area 2A-North, Victoria Quay, Leith, EH6 6QQ.
  - Alternatively, complaints may be raised with the Information Commissioners Office at [casework@ico.org.uk](mailto:casework@ico.org.uk).
-

# Further Information

The links below take you to the most up to date information on these topics.

## **Stats for Attainment**

The Scottish Government have developed a “School information dashboard” that provides a range of statistical information about each publicly funded school in Scotland. This includes school attainment information about Curriculum for Excellence Levels Achieved (for primary and secondary schools)

The dashboards can be consulted [here](#)

## **Aberdeenshire Council School Holiday Calendar**

<https://www.aberdeenshire.gov.uk/schools/school-info/school-term-dates/>

## **Map of catchment area**

<https://gis.aberdeenshire.gov.uk/maps/map.aspx?geolocate=true&resolution=2&initialDialog=localKnowledgeDialog>

---